

March 31, 2024 — April 6, 2024 (Week 14)

	Current Week (14)	Previous Week (13)
Percentage positive influenza tests ¹	7.4%	10.9%
Portland tri-county influenza-associated hospitalizations ²	14	16
Reported influenza outbreaks ³	0	2
Influenza-associated pediatric mortality ³	0	0

¹Percent positivity based on data from Oregon reporters to the National Respiratory and Enteric Virus Surveillance System (NREVSS)

²Based on hospitalization surveillance in Clackamas, Multnomah, and Washington counties only

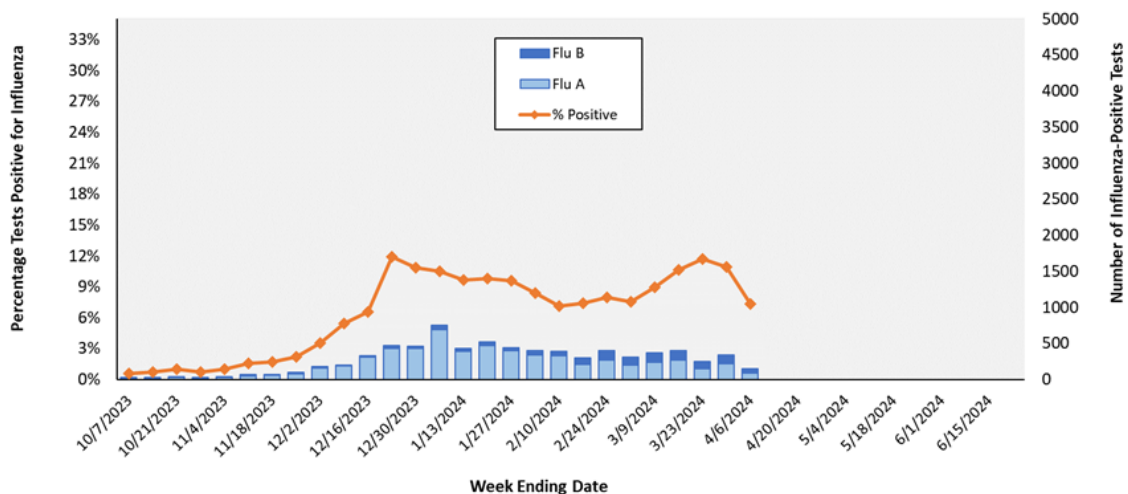
³Based on reports made to the Oregon Health Authority

Laboratory Surveillance: The National Respiratory and Enteric Virus Surveillance System (NREVSS) is a laboratory-based system that monitors influenza and other respiratory viruses circulating the United States.

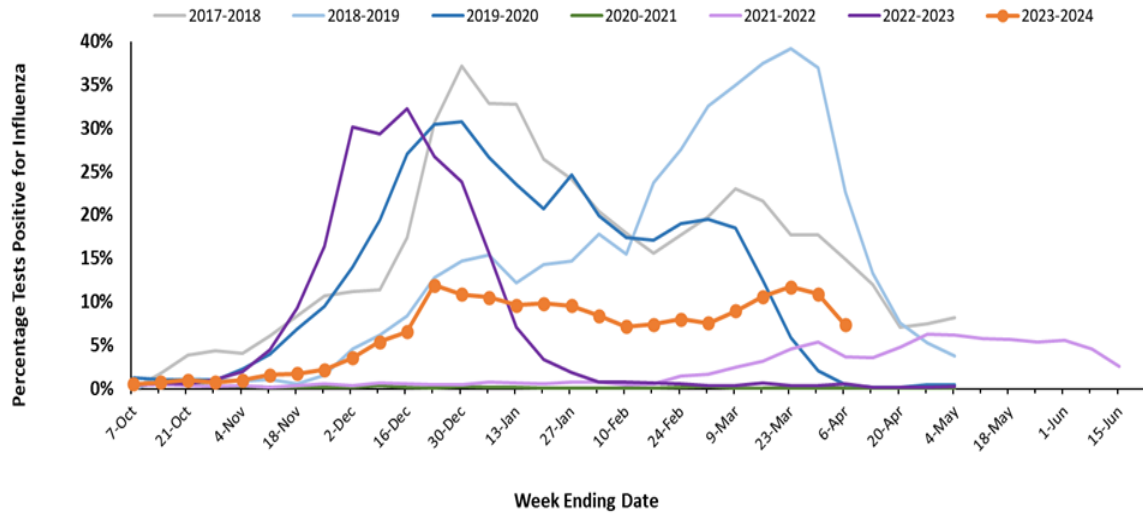
Table 1. Influenza Test Results in Oregon, NREVSS, Current Week, 2023–2024 Season

Region	Total Tests	Positive		Flu A		Flu B	
		No.	(%)	No.	(%)	No.	(%)
Portland Metro	338	10	3.0%	4	40.0%	6	60.0%
Southern Oregon	578	65	11.2%	39	60.0%	26	40.0%
Columbia Gorge	251	14	5.6%	10	71.4%	4	28.6%
Central Oregon	549	42	7.7%	28	66.7%	14	33.3%
Willamette Valley	349	21	6.0%	9	42.9%	12	57.1%
State Total	2065	152	7.4%	90	59.2%	62	40.8%

Figure 1. Oregon Influenza Laboratory Surveillance
Percent Positive Influenza Tests by Week, NREVSS, 2023-2024 Season

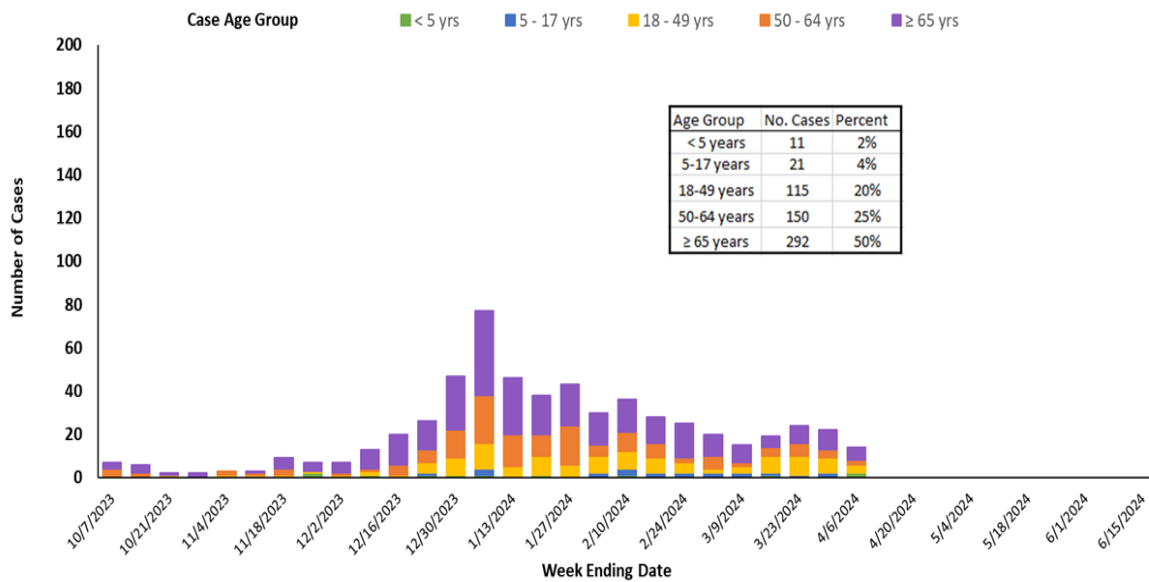


**Figure 2. Oregon Influenza Laboratory Surveillance
Percent Positive Influenza Tests by Season, NREVSS**



Portland Tri-County Influenza Hospitalizations: In Clackamas, Multnomah, and Washington counties 14 persons were hospitalized with influenza during week 14 of 2024. There have been 589 reported hospitalizations during the 2023-2024 season. The cumulative hospitalization rate for the 2023-2024 season is 32.0 per 100,000 people.

**Figure 2. Portland Metro Area Influenza-Associated Hospitalizations
by Week and Age Group, 2023-2024 Season**



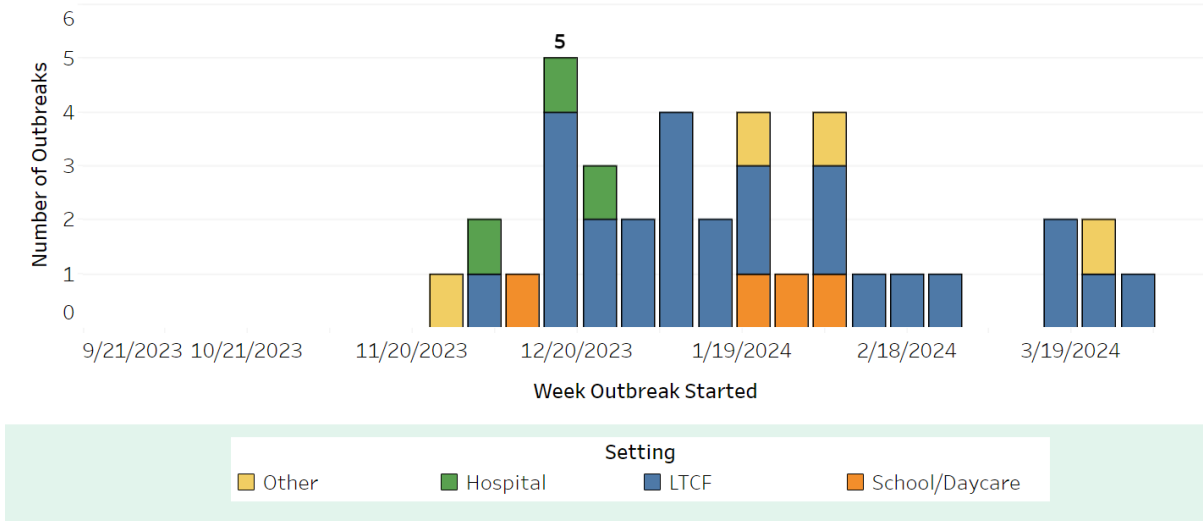
Influenza Outbreaks: 0 outbreaks were reported during Week 14, 2024

Influenza outbreaks

Influenza outbreaks are reported to OHA in high-consequence residential settings, K-12 school and childcare settings, and other settings of concern as determined by Local Public Health Authorities (LPHA). This graph shows Hospital, Long Term Care Facility (LTCF), School/Daycare, and Other outbreaks reported by LPHAs to OHA through the Orpheus Outbreaks database. Other outbreak settings may include but are not limited to: prisons and jails, shelters, transitional housing, home health care, workplaces, outpatient clinics, or other congregate settings. Data are provisional and subject to change.

1. Influenza outbreaks in Oregon by setting over time

This bar chart shows the number of outbreaks by setting by the week the outbreak started.



Influenza-Associated Pediatric Mortality Surveillance: Influenza-associated deaths in children 17 years of age and younger are nationally notifiable. There were no pediatric influenza deaths in Oregon reported during week 14, 2024, and 0 pediatric deaths reported to the Oregon Health Authority in the 2023-2024 influenza season.

U.S. Data (from [CDC FluView](#)): Seasonal influenza activity remains elevated nationally but is decreasing. Activity is decreasing or stable in nine HHS regions and increasing slightly in the Pacific Northwest.

Viruses

- **Clinical Labs:** The percentage of respiratory specimens testing positive for influenza at clinical laboratories is 7.7% this week.
- **Public Health Labs:** The most frequently reported viruses this week were influenza A (H1N1) pdm09, A(H3N2), and B viruses were all cocirculating this week.
- **Virus Characterization:** Genetic characterization data are now summarized on [CDC FluView](#)

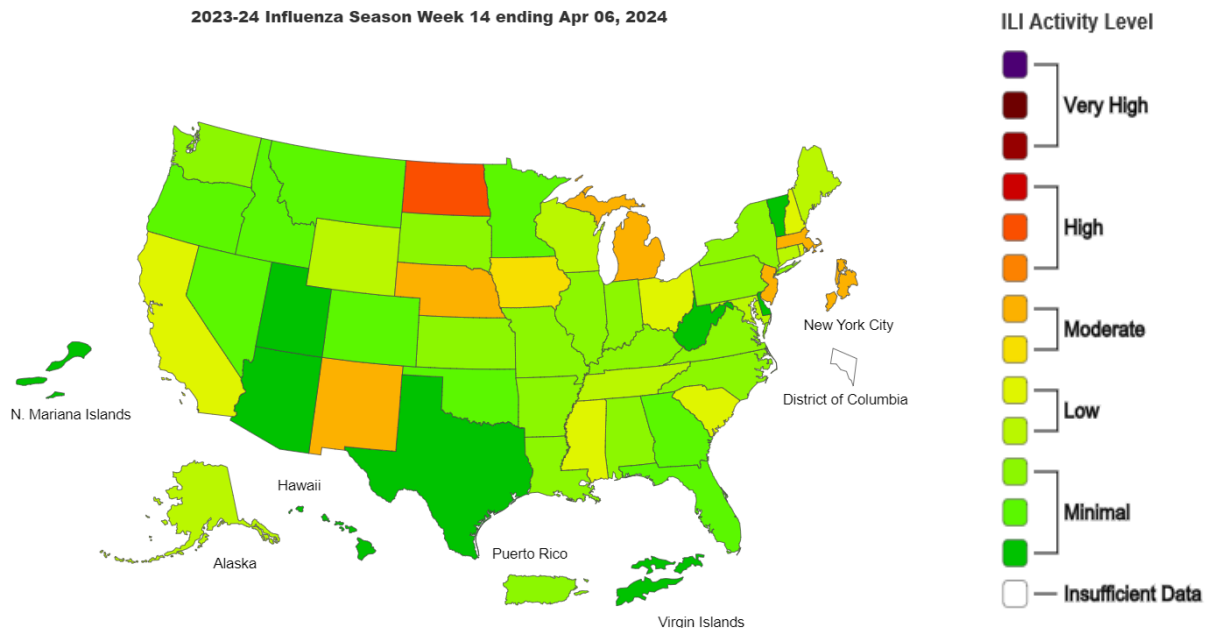
Illness

- **Outpatient Respiratory Illness:** Nationwide during week 14, 2.8% of visits to a health care provider are for respiratory illness.

Severe Disease

- **FluSurv-NET:** 76 per 100,000 cumulative hospitalization rate.
- **NHSN Hospitalizations:** 4,825 patients admitted to hospitals with influenza this week.
- **NCHS Mortality:** 0.4% of deaths attributed to influenza this week

Influenza-like Illness (ILI) Activity Level Indicator by Data Reported to ILINet



Map above: This map uses the proportion of outpatient visits to healthcare providers for influenza-like illness to measure the ILI activity level within a state. It does not, however, measure the extent of geographic spread of flu within a state. Therefore, outbreaks occurring in a single city could cause the state to display high activity levels.

Pediatric Deaths: 5 influenza related deaths were reported this week, 138 influenza-associated pediatric deaths have occurred during the 2023-2024 season and have been reported to CDC.

All Flu Bites data are preliminary and may change as additional reports are received. Find the most recent Flu Bites report online at: <http://www.oregon.gov/oha/ph/DiseasesConditions/CommunicableDisease/DiseaseSurveillanceData/Influenza/Pages/surveil.aspx>