



State Name: Oregon

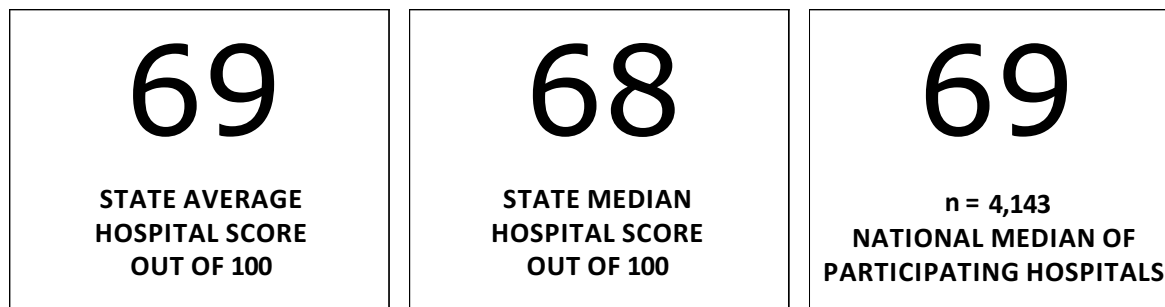
Report Date: 8/29/2013 4:46:14 PM

Number of Hospital Respondents: 50

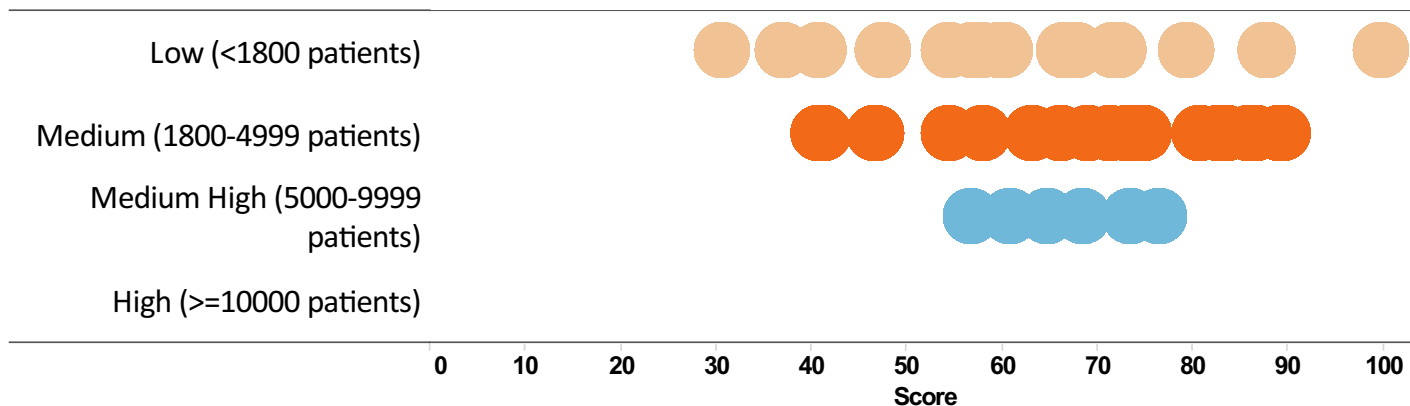
Number of Hospitals Assessed: 57

Response Rate: 87.7%

STATE SCORE AND COMPARATIVE SCORES:



DISTRIBUTION OF STATE SCORES FOR EACH VOLUME TYPE:



BREAKDOWN OF STATE SCORES FOR EACH VOLUME TYPE:

Annual Pediatric Volume	# of Hospitals	Avg. Score	Median Score	Min. Score	Max. Score
Low (<1800 patients)	19	64.1	66.7	31	100
Medium (1800-4999 patients)	21	69.8	73.3	41	90
Medium High (5000-9999 patients)	6	67.1	66.9	57	77
High (>=10000 patients)	4				
Grand Total	50	68.8	68.4	31	100

NOTE: Blank indicates fewer than 5 hospitals; score can't be shown.

BREAKDOWN OF NATIONAL SCORES FOR EACH VOLUME TYPE:

Annual Pediatric Volume	# of Hospitals	Avg. Score	Median Score	Min. Score	Max. Score
Low (<1800 patients)	1,628	62.0	61.4	22	100
Medium (1800-4999 patients)	1,242	69.8	69.3	27	100
Medium High (5000-9999 patients)	707	73.8	74.8	31	100
High (>=10000 patients)	563	84.3	89.9	35	100
Not Recorded	3				
Grand Total	4,143	69.4	69.0	22	100

NOTE: Blank indicates fewer than 5 hospitals; score can't be shown.

ANALYSIS OF YOUR SCORE:

Below are the average state scores* for each section of the assessment. The scores are based on the weighted assessment items for each section.

* The sum of the sectional scores below may vary slightly from actual overall readiness score above due to rounding.

Average Section Scores	State Section Scores	National Section Scores
Guidelines for Administration and Coordination (19 pts)	9.1	10.1
Physicians, Nurses, and Other Health Care Providers Who Staff the ED (10 pts)	5.3	5.3
Guidelines for QI/PI in the ED (7 pts)	2.2	2.9
Guidelines for Improving Pediatric Patient Safety in the ED (14 pts)	11.6	10.8
Guidelines for Policies, Procedures, and Protocols for the ED (17 pts)	10.6	10.5
Guidelines for Equipment, Supplies, and Medications for the Care of Pediatric Patients in the ED (33 pts)	30.0	29.4

Guidelines for Administration and Coordination of the ED for the Care of Children

Scored Items

	Yes (N)	% Yes	% National Yes	Difference
Nurse Coordinator	31	62.0%	59.4%	2.6%
Physician Coordinator	17	34.0%	47.5%	-13.5%

Physicians, Nurses, and Other Health Care Providers Who Staff the ED

Scored Items

	Yes (N)	% Yes	% National Yes	Difference
Nurse Competency Evaluations	36	72.0%	66.7%	5.3%
Physician Competency Evaluations	17	34.0%	38.7%	-4.7%

Guidelines QI/PI

Scored Items

	Yes (N)	% Yes	% National Yes	Difference
Does your ED have a pediatric patient care-review process?	17	34.0%	45.2%	-11.2%
<i>The following results are a breakdown of those who said "Yes" to having a pediatric patient care-review process...</i>				
Collection and analysis of pediatric emergency care data	17	100.0%	88.1%	11.9%
Identification of quality indicators for children	10	58.8%	58.4%	0.5%
Development of a plan for improvement in pediatric emergency care	13	76.5%	78.9%	-2.5%
Re-evaluation of performance using outcomes-based measures	12	70.6%	73.5%	-3.0%

Guidelines for Improving Pediatric Patient Safety in the ED

Scored Items

	Yes (N)	% Yes	% National Yes	Difference
Weigh in Kilograms	39	78.0%	67.8%	10.2%
If Weigh in Kilograms, also Record in Kilograms	33	84.6%	75.3%	9.3%
Temperature, heart rate, and respiratory rate recorded	48	96.0%	98.6%	-2.6%
Blood pressure monitoring available based on severity of illness	50	100.0%	98.1%	1.9%
Pulse oximetry monitoring available based on severity of illness	50	100.0%	99.7%	0.3%
Written procedure in place for notification of physicians when abnormal vital signs	30	60.0%	70.2%	-10.2%
Process in place for the use of pre-calculated drug dosing	42	84.0%	79.0%	5.0%
Process in place that allows for 24/7 access to interpreter services in the ED	50	100.0%	95.5%	4.5%

Guidelines for Policies, Procedures, and Protocols for the ED

Scored Items

	Yes (N)	% Yes	% National Yes	Difference
Triage policy that specifically addresses ill and injured children	31	62.0%	57.7%	4.3%
Policy for pediatric patient assessment and reassessment	36	72.0%	73.5%	-1.5%
Policy for immunization assessment and management of the under-immunized child	24	48.0%	51.7%	-3.7%
Policy for child maltreatment	44	88.0%	89.6%	-1.6%
Policy for death of the child in the ED	33	66.0%	58.1%	7.9%
Policy for reduced-dose radiation for CT and x-ray imaging based on pediatric age or weight	24	48.0%	52.6%	-4.6%
Policy for promoting family-centered care	39	78.0%	59.7%	18.3%
Hospital disaster plan addresses issues specific to the care of children	22	44.0%	46.9%	-2.9%
Inter-facility transfer guidelines	29	58.0%	70.7%	-12.7%

Guidelines for Equipment, Supplies, and Medications for the Care of Pediatric Patients in the ED

Scored Items

	Yes (N)	% Yes	% National Yes	Difference
Is the ED staff trained on the location of all pediatric equipment and medications?	50	100.0%	99.5%	0.5%
Is there a daily method used to verify the proper location and function of pediatric equipment and supplies?	41	82.0%	83.1%	-1.1%
Is a medication chart, length-based tape, medical software, or other system readily available to ensure proper sizing of resuscitation equipment and proper dosing of medications?	49	98.0%	99.5%	-1.5%
Neonatal blood pressure cuff	47	94.0%	92.0%	2.0%
Child blood pressure cuff	50	100.0%	99.9%	0.1%
Defibrillator with pediatric and adult capabilities including pads/paddles	50	100.0%	99.7%	0.3%
Pulse oximeter with pediatric and adult probes	50	100.0%	99.7%	0.3%
Continuous end-tidal CO2 monitoring device	49	98.0%	81.7%	16.3%
22 gauge catheter-over-the-needle	50	100.0%	99.7%	0.3%
24 gauge catheter-over-the-needle	50	100.0%	99.5%	0.5%
Pediatric intra-osseous needles	50	100.0%	97.6%	2.4%

Guidelines for Equipment, Supplies, and Medications for the Care of Pediatric Patients in the ED *cont.*

Scored Items

	Yes (N)	% Yes	% National Yes	Difference
IV administration sets with calibrated chambers and extension tubing and/or infusion devices with ability to regulate rate and volume of infusate	49	98.0%	95.3%	2.7%
Umbilical vein catheters (3.5F or 5.0F)	38	76.0%	62.4%	13.6%
Central venous catheters (any two sizes in range, 4F-7F)	28	56.0%	62.6%	-6.6%
Endotracheal tubes: cuffed or uncuffed 2.5 mm	46	92.0%	94.3%	-2.3%
Endotracheal tubes: cuffed or uncuffed 3.0 mm	49	98.0%	97.0%	1.0%
Endotracheal tubes: cuffed or uncuffed 3.5 mm	50	100.0%	98.4%	1.6%
Endotracheal tubes: cuffed or uncuffed 4.0 mm	50	100.0%	99.4%	0.6%
Endotracheal tubes: cuffed or uncuffed 4.5 mm	50	100.0%	98.6%	1.4%
Endotracheal tubes: cuffed or uncuffed 5.0 mm	50	100.0%	99.4%	0.6%
Endotracheal tubes: cuffed or uncuffed 5.5 mm	50	100.0%	98.1%	1.9%
Endotracheal tubes: cuffed or uncuffed 6.0 mm	50	100.0%	99.2%	0.8%
Laryngoscope blades: straight, size 00	41	82.0%	77.5%	4.5%
Laryngoscope blades: straight, size 0	48	96.0%	94.1%	1.9%
Laryngoscope blades: straight, size 1	50	100.0%	98.2%	1.8%
Laryngoscope blades: straight, size 2	50	100.0%	96.8%	3.2%

Guidelines for Equipment, Supplies, and Medications for the Care of Pediatric Patients in the ED *cont.*

Scored Items

	Yes (N)	% Yes	% National Yes	Difference
Laryngoscope blades: curved, size 2	48	96.0%	96.5%	-0.5%
Pediatric-sized Magill forceps	43	86.0%	82.5%	3.5%
Nasopharyngeal airways: infant-sized	40	80.0%	82.9%	-2.9%
Nasopharyngeal airways: child-sized	45	90.0%	87.8%	2.2%
Oropharyngeal airways: size 0 (50mm)	48	96.0%	92.6%	3.4%
Oropharyngeal airways: size 1 (60mm)	50	100.0%	96.6%	3.4%
Oropharyngeal airways: size 2 (70mm)	48	96.0%	95.7%	0.3%
Oropharyngeal airways: size 3 (80mm)	48	96.0%	96.8%	-0.8%
Stylets for pediatric/infant-sized endotracheal tubes	49	98.0%	97.4%	0.6%
Tracheostomy tubes: size 3.0 mm	27	54.0%	68.2%	-14.2%
Tracheostomy tubes: size 3.5 mm	28	56.0%	68.0%	-12.0%
Tracheostomy tubes: size 4.0 mm	33	66.0%	75.1%	-9.1%
Bag-mask device, self inflating: infant, 450 ml	49	98.0%	96.8%	1.2%
Masks to fit bag-mask device adaptor: neonatal	46	92.0%	92.4%	-0.4%
Masks to fit bag-mask device adaptor: infant	50	100.0%	98.5%	1.5%
Masks to fit bag-mask device adaptor: child	50	100.0%	99.0%	1.0%
Clear oxygen masks: standard infant	47	94.0%	93.4%	0.6%
Clear oxygen masks: standard child	50	100.0%	98.1%	1.9%
Non-rebreather masks: infant-sized	42	84.0%	84.1%	-0.1%
Non-rebreather masks: child-sized	50	100.0%	93.8%	6.2%

Guidelines for Equipment, Supplies, and Medications for the Care of Pediatric Patients in the ED *cont.*

Scored Items

	Yes (N)	% Yes	% National Yes	Difference
Nasal cannulas: infant	45	90.0%	91.0%	-1.0%
Nasal cannulas: child	48	96.0%	95.9%	0.1%
Laryngeal mask airways: size 1	35	70.0%	57.2%	12.8%
Laryngeal mask airways: size: 1.5	33	66.0%	55.1%	10.9%
Laryngeal mask airways: size: 2	36	72.0%	60.9%	11.1%
Laryngeal mask airways: size: 2.5	35	70.0%	58.6%	11.4%
Laryngeal mask airways: size: 3	38	76.0%	66.4%	9.6%
Suction catheters: at least one in range 6-8F	50	100.0%	98.5%	1.5%
Suction catheters: at least one in range 10-12F	50	100.0%	99.2%	0.8%
Supplies/kit for pediatric patients with difficult airways (supraglottic airways of all sizes, needle cricothyrotomy supplies, surgical cricothyrotomy kit)	41	82.0%	75.4%	6.6%